

# junction24

As one of the most versatile event spaces in the Southwest Junction 24 can be used for a multitude of events large or small.

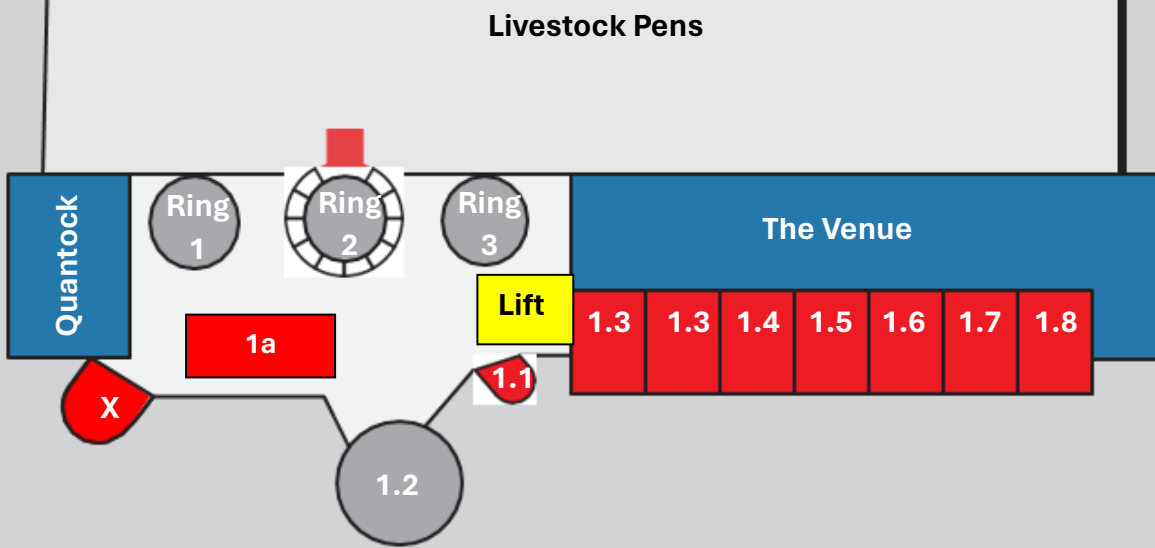
Our purpose-built complex can host numbers between 2 in our Executive meeting room to 1500 standing in our largest pillarless space, The Venue. Combine this with the facility of parking over 1000 cars outside in our own floodlit car park,

a superb, refurbished restaurant and catering team Junction 24 is able to deal with any event. Please take a look at the following information to see how we can make your event succeed.



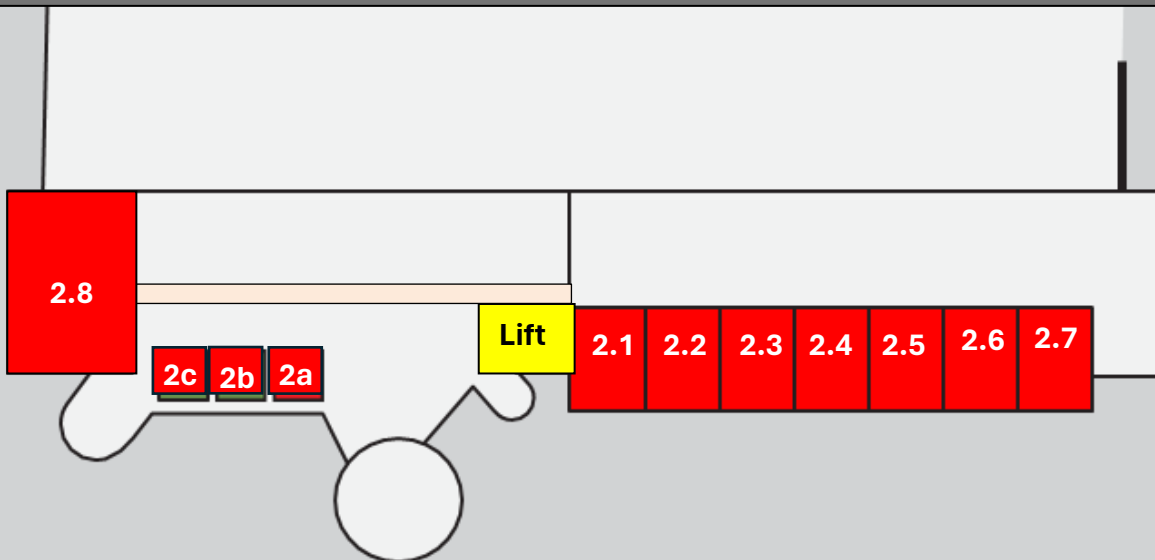
To assist with your navigation and understanding of Junction 24, please see below. (Maps correct at time of press)

## Ground Floor Map



- |     |                   |     |                     |
|-----|-------------------|-----|---------------------|
| 1.1 | J24 Main Office   | 1.6 | Voyage Care         |
| 1.2 | Canteen           | 1.7 | Voyage Care         |
| 1.3 | GTH               | 1.8 | Farm Vets Southwest |
| 1.4 | Amicus Solicitors | 1a  | GTH Market Office   |
| 1.5 | Amicus Solicitors | X   | Berrywire           |

## First Floor Map



- |     |              |     |                       |
|-----|--------------|-----|-----------------------|
| 2.1 | Care Planner | 2.5 | John Hodge Solicitors |
| 2.2 | Care Planner | 2.6 | NFU Mutual            |
| 2.3 | Care Planner | 2.7 | NFU Mutual            |
| 2.4 | Care Planner | 2.8 | Uniform Agri          |

# Atrium

Atrium, our smallest room for up to 12 delegates in a Boardroom layout with floor to ceiling windows overlooking the Car Park.



# Quantock Hall

Quantock Hall offers a truly flexible space. With full-height windows the room is constantly bathed in natural light and has the flexibility to hold a maximum of 200 people in a theatre style layout. However, alternative layouts are also an option and allow you to hold any form of event ranging from a conference to a live event or dinner dance.

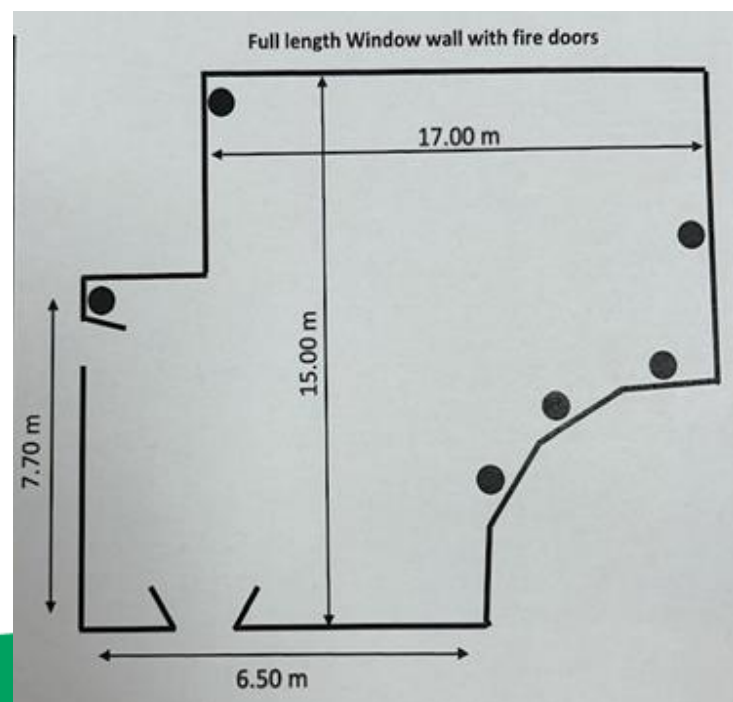


- Theatre 200 Delegates
- Cabaret 100 Delegates

Our Round Tables can hold up to 10 Delegates per table with up to 10 tables in the room. (Tablecloths need to be requested)

Or we have Rectangle Tables:

- Boardroom 44 Delegates
- U-shape 38 Delegates



Our largest space. This spacious column-free hall measures 78m x 14m, thus offering huge flexibility for use, up-to 400 seated and 1500 standing.

All production opportunities are welcome including:

- Exhibitions
- Media Launches
- Live Music Events
- Club Nights
- Displays
- Large Conferences and Meetings
- Markets
- Trade Fairs



**Junction 24 Ltd**, Sedgemoor Auction  
Centre, Market Way, North Petherton,  
Somerset, TA6 6DF  
**01278 662200**  
[enquiries @junction24ltd.co.uk](mailto:enquiries@junction24ltd.co.uk)  
[www.junction24ltd.co.uk](http://www.junction24ltd.co.uk)



We can also facilitate any requirements for breakout/green rooms and can also support your events technical and infrastructure requirements, this includes:

- Staging
- Lighting and Sound
- Seating
- Security, First Aid & Staff Provision
- Box Office requirements
- Marketing and PR Support

Due to the rooms flexibility please speak directly to one of our events team T: 01278 662200

E: [enquiries@junction24ltd.co.uk](mailto:enquiries@junction24ltd.co.uk)

## Dry Hire Conferencing Charges

### Quantock Hall

£250.00 per day plus VAT

£125.00 part day plus VAT (up to 4 hours)

### Atrium

£80.00 per day plus VAT

£45.00 part day plus VAT (up to 4 hours)

Regardless of numbers we have rooms that can cater for most events and purposes. Please feel free to discuss your requirements with our event team. Our conference rooms have all the AV Requirements you may need and are included in the hire rate. This includes.

- Projector and Screen, or Flat screen Monitor
- Lectern (where possible)
- Flip Chart & Pens
- Whiteboard
- Wi-Fi

\*For extra furniture hire. Please ask for more information and our current charges

### The Venue

Due to the rooms flexibility please speak directly to one of our events team T: 01278 662200

E: [enquiries@junction24ltd.co.uk](mailto:enquiries@junction24ltd.co.uk)